

# Report for Graduating Students Survey (2005-2008)

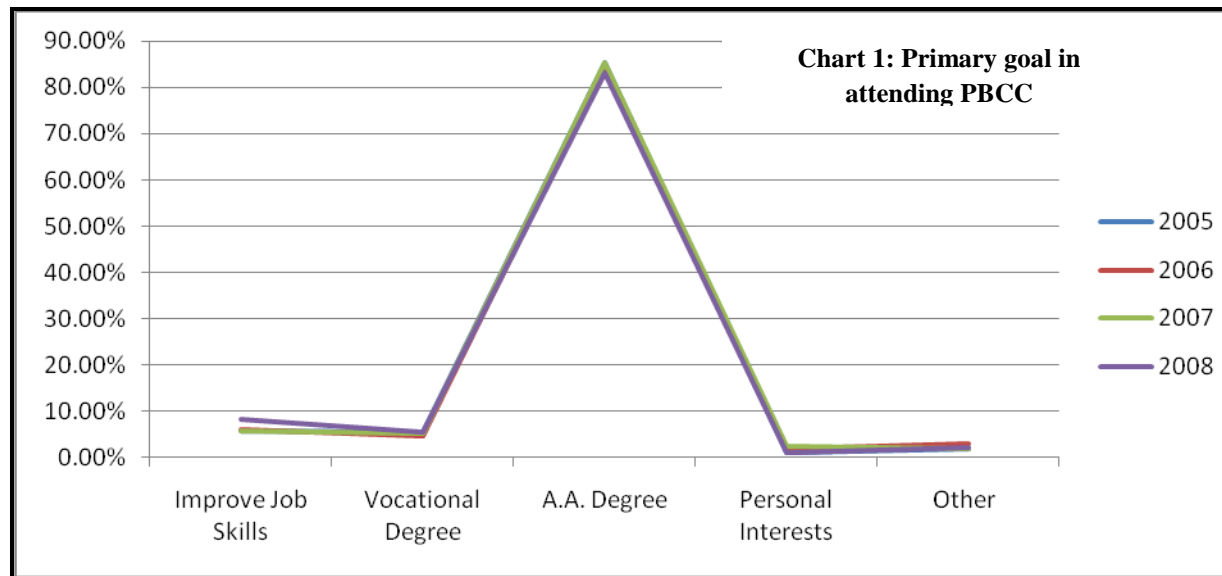
July 2009

*Office of Institutional Research and Effectiveness*

## Overview (2005-2008)

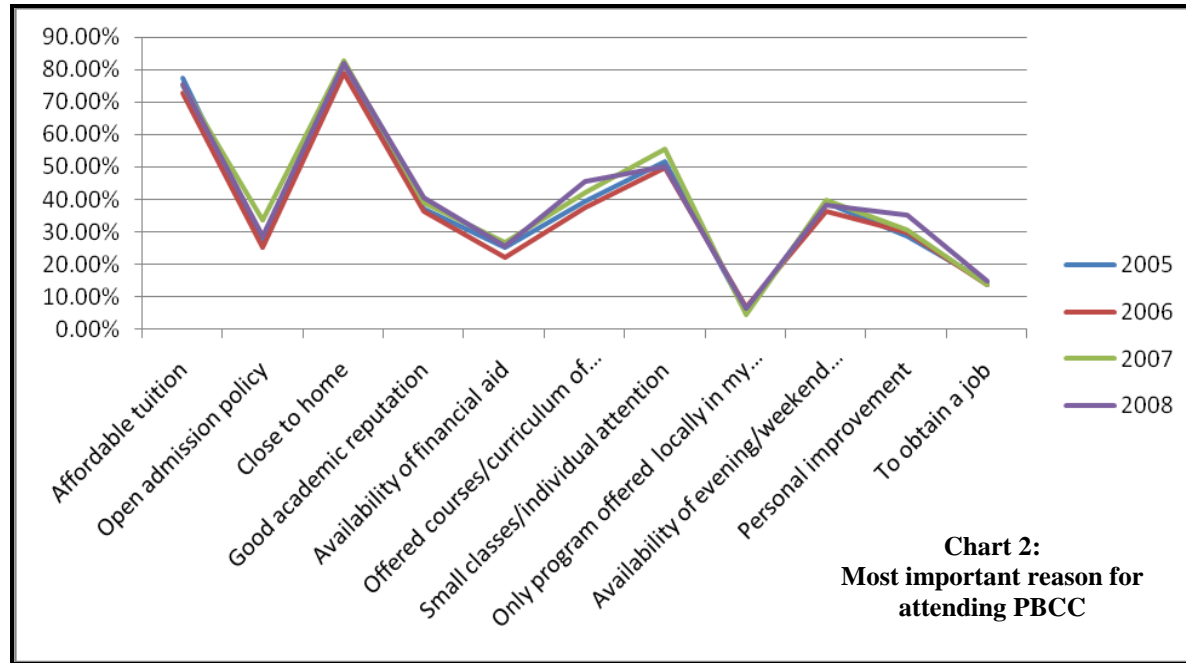
The following report presents results from a survey given to graduating students at PBCC between the years of 2005-2008. This section gives an overview of the results from the data during these four years.

- 📄 Response totals varied during the four years: In the year, 2005 – 911 responses; 2006-722 responses; 2007- 606 responses, and 2008-605 responses.
- 📄 More students attended classes primarily during the day (average=67.3%).
- 📄 The majority of the graduating students indicated that they were graduating with an A.A degree (average=86.4%), while much smaller percentages graduated with A.S degrees, A.A.S degrees and certificates.
- 📄 Most students said their **primary goal** was to obtain an associate degree in order to transfer to a four-year college/university (average=93.3%).

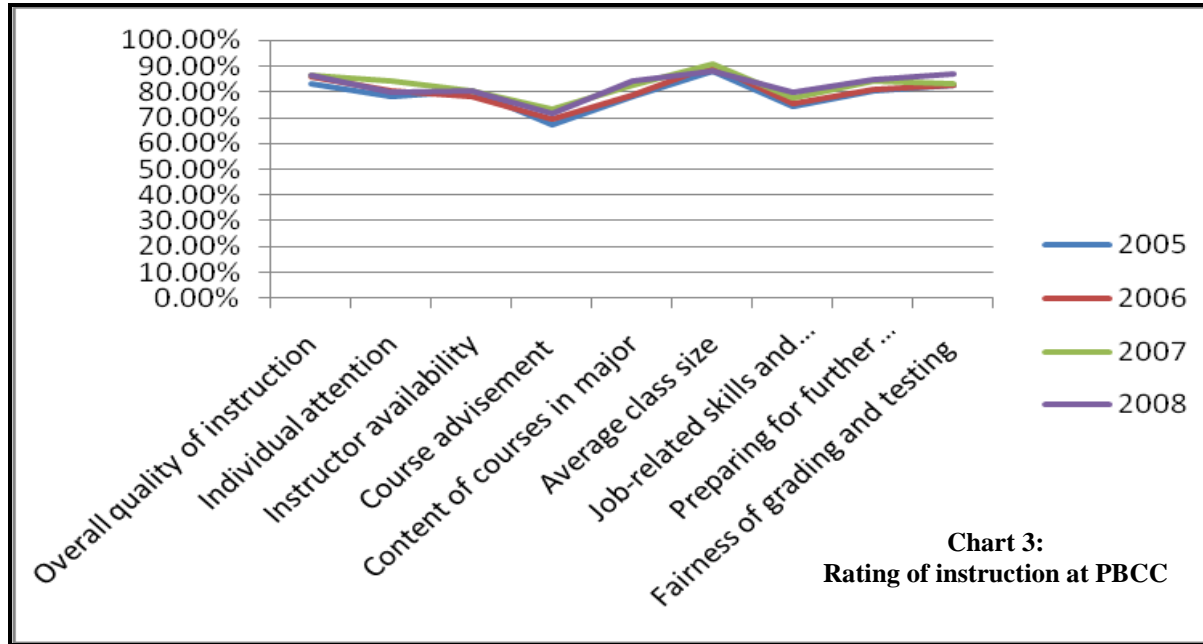


- 📄 Students also said that they have achieved their primary goal while attending PBCC (average=84.5%).

Over the years, the number one most **important reason** that students attended PBCC was because it was in close proximity to home (average=81.3%); the second was because PBCC offered affordable tuition (average=75.1%).

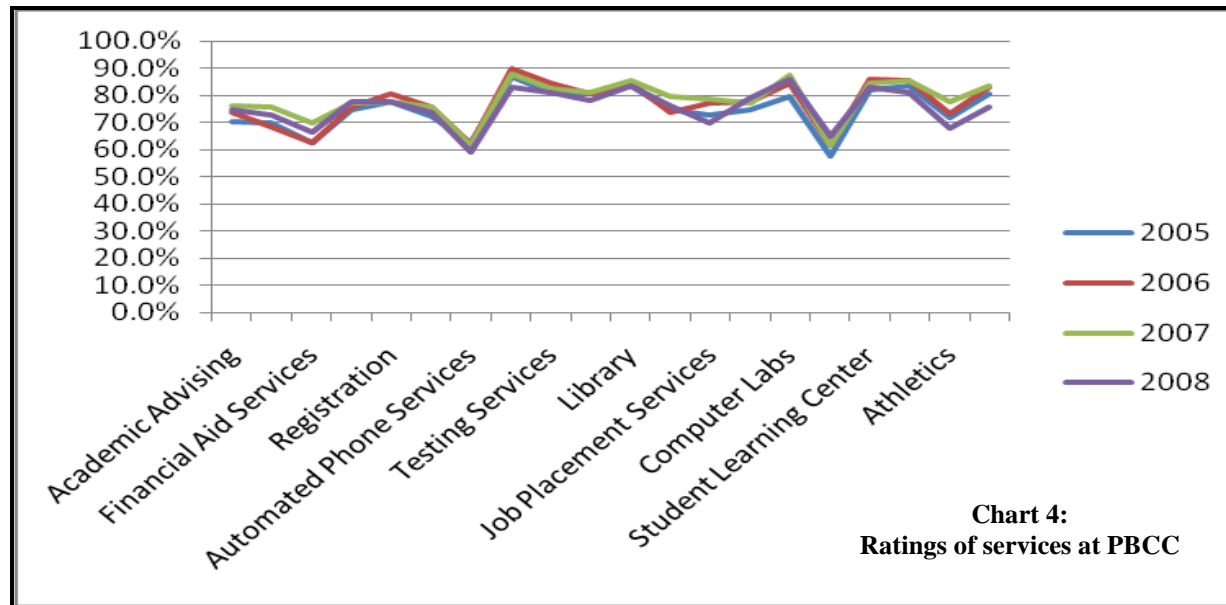


✍ The majority of students consistently rated very positively of all the aspects related to **instruction**, with the highest positive rating (average =89.2%) for average class size, (excellent rating + good rating).



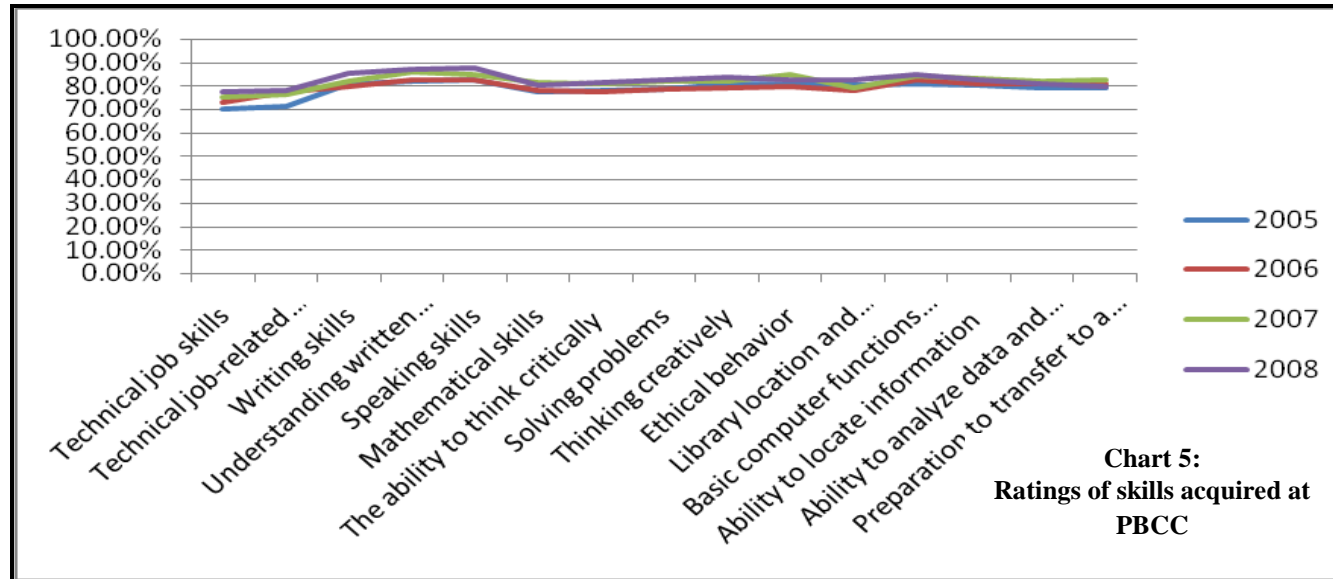
\*Note: Percent of students who responded with excellent or good.

When asked about **the services available** to students at PBCC, students were pleased with the services PBCC offered (excellent rating + good rating).



\*Note: Percent of students who responded with excellent or good.

🎓 Students felt very satisfied about how PBCC has prepared them in **specific job-related** skills and. Like with the services available, all skills were also rated similarly (excellent rating + good rating).



\*Note: Percent of students who responded with excellent or good.

🎓 Overall, students seem to be very impressed with PBCC. Graduating students (average=74.1%) indicated that they would recommend PBCC to their friends.

### Results for Graduating Student Survey 2005

During the year **2005**, a total of 911 students responded to the graduation survey. Full-time students accounted for 67.7% of the total and 32.3% were part-time students. The majority (49.8%) of students attended the Lake Worth campus. Smaller percentages attended the Palm Beach Gardens (23.7%), Boca Raton (21.5%) and Belle Glade (5.0%) campuses, respectively.

The highest percentage (68.1%) attended primarily day classes, and 30.4% attended primarily evening classes. There was a very low percentage attended primarily distance/online and weekend classes. Most of the graduating students were graduating with an A.A. degree (87.4%). Others graduated with A.S (7.6%) and A.A.S degrees (4.4%)(Q4).

Prior to enrolling at PBCC, over 39% indicated that they have attended other colleges/universities (Q6). Most of the graduating applicants were employed full-time (47.6%), and 40% were employed part-time while attending PBCC (Q7). Six percent were not employed nor were they seeking employment, whereas only 2.5% were unemployed and seeking employment. The majority (53.2%) of students indicated that their jobs were not related to the curriculum at the College. Those who felt that their job was directly or somewhat related to the curriculum accounted for 37.4% of the sample (Q8). As for receiving financial aid or scholarships, 44.3% of the graduating students indicated positively (Q9).

Over 85% of the students specified that the primary goal of attending PBCC was to obtain an associate degree in order to transfer to a four-year college/university (Q10). Six percent indicated that they would like to obtain occupational/technical training that would improve present/future employment. And a little over 5% indicated that their primary goal was to obtain an occupational/technical degree or certificate. Approximately 93% of the graduating students indicated that they have achieved their primary goal (Q11).

When asked to indicate the most important reasons (multi-response answer, Q12) why they chose PBCC, over 81% responded that it was in close proximity to home. Over 77% responded that the tuition was affordable, 51.6% specified that the classes were small and there was individual attention. The other reasons offered were courses/curriculums of interest; availability of evening/weekend courses, and good academic reputation.

Over 82% agreed that if PBCC has not been available, they would be able to continue their education elsewhere. Among the 17.9% (Q13) of the students who indicated that they would not be able to continue their education, 41.4% said that tuition and fees at other colleges were more than they could afford, 29.6% indicated that they were only able to attend a college within commuting distance from home, and 15.4% said that only PBCC offered courses at times that fit with their family and work responsibilities.

In planning for the future after PBCC, the majority (80.5%) of the students planned to transfer to a four-year college. Approximately 10% planned to work either full-time and/or part time (Q15).

Overall, when asked about specifics related to instruction at PBCC (Q16), students rated all aspects positively. Even though responses were distributed similarly, the highest amount of responses was student's satisfaction in average class size.

Students felt very satisfied about the services provided by PBCC (Q17). The only areas in which students expressed some dissatisfaction were in Academic Advising, Computer labs and the Cafeteria.

When asked to rate how they felt PBCC has prepared them in specific areas and experiences (Q18, 19, 20), students also responded very positively. All skilled areas were rated similarly.

Overall, the students seem to be very impressed with PBCC (92.7%) and over 90% indicated that they would recommend PBCC to friends.

When asked how long they attended PBCC, 41.5% of students responded that they have been here between 2-3 years, 31.1% indicated they have been here 3-5 years and 15% of students attended PBCC for less than two years.

There were more female students than males responded to the graduating survey, 69.9% females and 30.1% males. Most students were within the age groups of 20-21, 22-24 and 30-39 respectively. Most students belong to the racial/ethnic background of "White" (61.1%), "Black" (17.2%), and "Hispanic/Latino" (13.6%).



## Graduating Student Frequencies (Spring and Fall 2005)

**TOTAL STUDENTS = 911**

**Q1 Did you attend PBCC primarily as a**

Items		
	#	%
Full-time student	617	67.7%
Part-time student	294	32.3%

**Q2 On which campus did you take most of your classes**

Items		
	#	%
Lake Worth	454	49.8%
Palm Beach Gardens	216	23.7%
Boca Raton	196	21.5%
Belle Glade	46	5.0%

**Q3 Did you attend class primarily as a:**

Items		
	#	%
Day student	613	68.1%
Evening student	274	30.4%
Weekend student	4	0.4%
Distance/Online learning student	9	1.0%

**Q4 Please indicate which degree or certificate you are graduating with.**

Items		
	#	%
A.A. degree	797	87.4%
A.S. degree	69	7.6%
A.A.S. degree	40	4.4%
Certificate	6	0.7%

**Q6 Before you enrolled at PBCC, had you ever attended another college/university?**

Items		
	#	%
Yes	357	39.3%
No	552	60.7%

**Q7 During the time you were enrolled at PBCC, were you:**

Items		
	#	%
Employed full-time	434	47.6%
Employed part-time	364	40.0%
Homemaker, not employed outside the home	34	3.7%
Not employed and seeking employment	23	2.5%
Not employed and not seeking employment	56	6.1%

**Q8 If you were employed while attending PBCC, was your job related to your curriculum at the College?**

Items		
	#	%
Yes, directly related	126	14.0%
Yes, somewhat related	211	23.4%
No, not related	479	53.2%
Not employed while attending PBCC	85	9.4%

**Q9 Did you receive financial aid or scholarships while attending PBCC?**

Items		
	#	%
Yes	459	53.2%
No	404	46.8%

**Q10 What was your primary goal in attending PBCC?**

Items		
	#	%
To obtain occupational/technical training that would improve present/future employment	55	6.0%
To obtain an occupational/technical degree or certificate	50	5.5%
To obtain an associate degree in order to transfer to a four-year college/university	776	85.2%
To enroll in courses that would satisfy specialized/personal interests	11	1.2%
Other (please specify)	19	2.1%

**Q11 Did you achieve your primary goal?**

Items		
	#	%
Yes	845	92.7%
No	16	1.8%
Not sure (please Specify)	51	5.6%

**Q12 Please indicate the most important reasons you attended PBCC.**

Items		
	#	%
Affordable tuition	703	77.2%
Open admission policy	248	27.2%
Close to home	745	81.8%
Good academic reputation	338	37.1%
Availability of financial aid	230	25.2%
Offered courses/curriculum of interest	359	39.4%
Small classes/individual attention	470	51.6%
Only program offered locally in my area of interest	48	5.3%
Availability of evening/weekend courses	349	38.8%
Personal improvement	262	28.8%
To obtain a job	133	14.6%
To obtain better pay/promotion	177	19.4%

Note: Multiple responses allowed: percents don't total 100.

**Q13 If PBCC had not been available, would you have been able to continue your education elsewhere?**

Items		
	#	%
Yes	750	82.1%
No	163	17.9%

**Q14 Please indicate the primary reason that you would not have been able to continue your education.**

Items		
	#	%
Only PBCC offered my program	8	4.9%
Only able to attend college within commuting distance of my home	48	29.6%
Tuition and fees at other colleges were more than I could afford	67	41.4%
Only PBCC offered courses at times that fit with my family and work responsibilities	25	15.4%
Was not accepted for admission into other colleges	6	3.7%
Other (please specify)	8	4.9%

**Q15 After graduating from PBCC, what are your plans for the future?**

Items		
	#	%
Transfer to a four-year college	734	80.5%
Work full-time	87	9.5%
Work part-time	5	0.5%
Military	1	0.1%
Not sure	30	3.3%
Other	55	6.0%

**Q16 How you feel about the following items related to instruction at PBCC .**

Items	Excellent (5)		4		3		2		Poor (1)		Total
	#	%	#	%	#	%	#	%	#	%	
Overall quality of instruction	353	39.0%	400	44.2%	126	13.9%	23	2.5%	4	0.4%	906
Individual attention from professors	354	39.7%	344	38.6%	167	18.7%	22	2.5%	5	0.6%	892
Instructor availability	350	39.4%	364	40.9%	132	14.8%	39	4.4%	4	0.4%	889
Course advisement from faculty members	319	36.3%	273	31.1%	165	18.8%	76	8.6%	46	5.2%	879
Content of courses in major curriculum	342	38.3%	355	39.8%	154	17.2%	29	3.2%	13	1.5%	893
Average class size	475	52.4%	322	35.5%	90	9.9%	17	1.9%	2	0.2%	906
Quality of curriculum in providing job-related skills and knowledge	305	36.3%	321	38.2%	164	19.5%	34	4.0%	16	1.9%	840
Quality of curriculum in preparing for further education	364	41.0%	349	39.3%	134	15.1%	29	3.3%	11	1.2%	887
Fairness of grading and testing practices	402	44.6%	342	38.0%	122	13.5%	25	2.8%	10	1.1%	901

**Q17 How you feel about the following services available to students at PBCC.**

Items	Excellent (5)		4		3		2		Poor (1)		Total
	#	%	#	%	#	%	#	%	#	%	
Academic Advising	361	42.9%	232	27.6%	128	15.2%	55	15.2%	65	7.7%	841
Personal Guidance and Counseling	300	42.0%	198	27.7%	122	17.1%	47	17.1%	47	6.6%	714
Financial Aid Services	245	38.8%	150	23.8%	124	19.7%	60	19.7%	52	8.2%	631
Admissions	340	39.7%	302	35.3%	153	17.9%	42	17.9%	19	2.2%	856
Registration	374	43.3%	297	34.4%	144	16.7%	32	16.7%	16	1.9%	863
Registrar's Office	316	39.6%	262	32.9%	152	19.1%	40	19.1%	27	3.4%	797
Automated Phone Services	214	34.0%	178	28.3%	147	23.4%	48	23.4%	42	6.7%	629
Online Services	492	57.2%	257	29.9%	89	10.3%	8	10.3%	14	1.6%	860
Testing Services	333	45.4%	262	35.7%	106	14.5%	24	14.5%	8	1.1%	733
Lab Facilities (biology, chemistry, math, etc.)	330	49.0%	213	31.6%	100	14.8%	22	14.8%	9	1.3%	674
Library	406	52.6%	238	30.8%	93	12.0%	21	12.0%	14	1.8%	772
Career Planning and counseling	238	39.9%	208	34.9%	101	16.9%	31	16.9%	18	3.0%	596
Job Placement Services	151	41.3%	115	31.4%	67	18.3%	21	18.3%	12	3.3%	366
Student Activities (clubs, events, etc.)	193	43.1%	142	31.7%	78	17.4%	26	17.4%	9	2.0%	448
Computer Labs	372	49.2%	229	30.3%	82	10.8%	17	10.8%	56	7.4%	756
Cafeteria	166	29.4%	159	28.2%	110	19.5%	58	19.5%	71	12.6%	564
Student Learning Center	285	48.0%	202	34.0%	87	14.6%	18	14.6%	2	0.3%	594
Disability Services	155	57.0%	73	26.8%	32	11.8%	8	11.8%	4	1.5%	272
Athletics	125	44.2%	78	27.6%	46	16.3%	16	16.3%	18	6.4%	283
Theater	178	49.4%	112	31.1%	49	13.6%	13	13.6%	8	2.2%	360

**Q18 How you feel about how PBCC has prepared you in the following areas.**

Items	Excellent (5)		4		3		2		Poor (1)		Total
	#	%	#	%	#	%	#	%	#	%	
Technical job skills	183	35.7%	178	34.7%	122	23.8%	17	3.3%	13	2.5%	513
Technical job-related knowledge	184	34.9%	192	36.4%	130	24.7%	12	2.3%	9	1.7%	527
Writing skills	321	40.7%	316	40.1%	119	15.1%	21	2.7%	11	1.4%	788
Understanding written information	343	43.1%	311	39.1%	119	14.9%	16	2.0%	7	0.9%	796
Speaking skills	359	45.8%	288	36.7%	105	13.4%	25	3.2%	7	0.9%	784
Mathematical skills	318	40.5%	291	37.1%	134	17.1%	20	2.5%	22	2.8%	785
The ability to think critically rather than just memorize	319	39.8%	307	38.3%	134	16.7%	23	2.9%	19	2.4%	802
Solving problems	318	39.8%	311	38.9%	139	17.4%	18	2.3%	13	1.6%	799
Thinking creatively	346	43.6%	294	37.0%	119	15.0%	22	2.8%	13	1.6%	794
Ethical behavior	337	43.4%	291	37.5%	116	14.9%	21	2.7%	12	1.5%	777
Locating and using information in the library	329	44.5%	264	35.7%	100	13.5%	29	3.9%	18	2.4%	740
Basic computer functions and applications	345	44.9%	274	35.7%	122	15.9%	17	2.2%	10	1.3%	768
Ability to locate information quickly and efficiently	339	43.7%	284	36.6%	125	16.1%	18	2.3%	10	1.3%	776
Ability to analyze data and draw conclusions	321	41.5%	293	37.9%	136	17.6%	15	1.9%	8	1.0%	773
Preparation to transfer to a four-year college	366	46.9%	250	32.1%	105	13.5%	31	4.0%	28	3.6%	780

**Q19 How you feel your coursework at PBCC has developed your abilities in the following areas.**

Items	Excellent (5)		4		3		2		Poor (1)		Total
	#	%	#	%	#	%	#	%	#	%	
Word processing	369	52.8%	220	31.5%	87	12.4%	12	1.7%	11	1.6%	699
Spreadsheets	257	43.8%	179	30.5%	109	18.6%	22	3.7%	20	3.4%	587
Graphics	229	41.7%	162	29.5%	107	19.5%	28	5.1%	23	4.2%	549
Data entry	260	43.9%	202	34.1%	88	14.9%	22	3.7%	20	3.4%	592
Database management	214	39.9%	174	32.5%	102	19.0%	24	4.5%	22	4.1%	536
Internet skills	387	54.9%	209	29.6%	82	11.6%	16	2.3%	11	1.6%	705
E-mail	393	56.5%	192	27.6%	79	11.4%	20	2.9%	11	1.6%	695
Web page development	212	42.7%	136	27.4%	90	18.1%	28	5.6%	31	6.2%	497
Multimedia software (e.g., Powerpoint)	298	47.8%	195	31.3%	89	14.3%	23	3.7%	19	3.0%	624

**Q20 Rate the following aspects of your experience at PBCC.**

Items	Excellent (5)		4		3		2		Poor (1)		Total
	#	%	#	%	#	%	#	%	#	%	
Opportunity to meet other students	375	49.7%	211	28.0%	127	16.8%	30	4.0%	11	1.5%	754
Opportunity to develop friendships with students of diverse cultural backgrounds	381	50.7%	207	27.6%	128	17.0%	25	3.3%	10	1.3%	751
Availability of courses in the sequence you need them	319	41.2%	222	28.7%	147	19.0%	57	7.4%	29	3.7%	774
Overall quality of classroom instruction	326	42.0%	296	38.1%	123	15.9%	23	3.0%	8	1.0%	776
Availability of faculty outside of class	294	39.7%	259	35.0%	139	18.8%	31	4.2%	17	2.3%	740
General helpfulness of faculty	338	44.1%	263	34.3%	129	16.8%	25	3.3%	12	1.6%	767
General helpfulness of other college employees	295	39.5%	251	33.6%	140	18.7%	43	5.8%	18	2.4%	747
Ease of getting accurate answers to my questions	279	36.4%	241	31.4%	158	20.6%	59	7.7%	30	3.9%	767
Timely availability of information on the range of services available to students	284	38.2%	241	32.4%	160	21.5%	36	4.8%	22	3.0%	743
Adequacy of classroom physical environment for learning	326	43.1%	265	35.1%	134	17.7%	18	2.4%	13	1.7%	756
Adequacy of study spaces	330	43.6%	274	36.2%	117	15.5%	27	3.6%	9	1.2%	757
Adequacy of places to rest and relax between classes	310	41.9%	238	32.2%	127	17.2%	40	5.4%	24	3.2%	739
Facility cleanliness	323	41.8%	264	34.2%	134	17.4%	33	4.3%	18	2.3%	772
Physical attractiveness of campus	316	41.1%	267	34.8%	144	18.8%	30	3.9%	11	1.4%	768
Sense of comfort with campus environment and atmosphere	352	45.7%	294	38.1%	98	12.7%	21	2.7%	6	0.8%	771
Sense of comfort with institutional cultural diversity	361	47.2%	288	37.6%	97	12.7%	12	1.6%	7	0.9%	765
Sense of personal and property safety inside college buildings	371	48.4%	272	35.5%	98	12.8%	18	2.3%	8	1.0%	767
Sense of personal and property safety outside of college buildings	346	45.3%	259	33.9%	117	15.3%	29	3.8%	12	1.6%	763
Sense of being respected and valued as an individual	364	47.5%	270	35.2%	105	13.7%	19	2.5%	9	1.2%	767

**Q21 What is your overall impression of PBCC?**

Items	#	%
Excellent	432	49.0%
Good	385	43.7%
Fair	57	6.5%
Poor	8	0.9%

**Q22 Would you recommend PBCC to your friends?**

Items	#	%
Definitely	646	73.0%
Probably	175	19.8%
Might or might not	48	5.4%
Probably not	14	1.6%
Definitely no	2	0.2%

**Q23 How many years did you attend PBCC?**

Items	#	%
Less than 1 year	18	2.0%
1 year but less than 2 years	133	15.0%
2 years but less than 3 years	367	41.5%
3 years but less than 5 years	275	31.1%
5 years or more	92	10.4%

**Q24 What is your gender?**

Items	#	%
Male	267	30.1%
Female	619	69.9%

**Q25 What is your age**

Items	#	%
Under 20	68	7.7%
20 - 21	251	28.3%
22 - 24	201	22.6%
25 - 29	149	16.8%
30 - 39	151	17.0%
40 or older	68	7.7%

**Q26 What is your racial/ethnic background?**

Items	#	%
Asian or Pacific Islander	30	2.9%
Black or African American	176	17.2%
Hispanic or Latino	139	13.6%
American Indian or Alaskan Native	4	0.4%
White	624	61.1%
Other	49	4.8%

### Results for Graduating Student Survey 2006

During the year **2006**, 722 students responded to the survey (a drop of approximately 21% from 2005), with 66.3% being full-time students and 33.7% being part-time. The majority (48.2%) attended the Lake Worth campus, 26.9% at the Palm Beach Gardens campus, 21.8% at the Boca Raton campus and only 3.1% at the Belle Glade Campus.

Many students attended classes primarily during the day (68.7%), and 28.1% primarily attended evening classes. A low percentage of students primarily attended Distance/online learning.

Most students (87%) indicated that they were graduating with an A.A degree, while a much smaller percentage graduated with A.S degree (8.3%), and A.A.S degrees (3.9%).

A high percentage (62.6%) of students did not attend college/university prior to PBCC. During the time of being enrolled at PBCC, 46% indicated that they were employed full time and 39.1% were working part time. Approximately 10% responded that they were not employed and not seeking employment and 2.5% indicated that they were not employed but seeking employment (Q7). Among the 85.1% who indicated they were employed, 39.1% agreed that the curriculum was related to their job (Q8).

Over 52% (Q9) responded that they have received financial aid or scholarships while attending PBCC. A high number of students (84.3%) mentioned that their primary goal was to obtain an associate degree in order to transfer to a four-year college/university. Other goals included, to obtain occupational/technical training that would improve present/future employment, obtain an occupational/technical degree or certificate, and to enroll in courses that would satisfy specialize/personal interests. Approximately 92% of the students agreed that they have achieved their primary goal (Q11).

The number one most important reason that students attended PBCC was because it was close to home (78.8%). The second important reason was affordable tuition (72.6%). Additional top three reasons were, small classes/individual attention, offered courses/curriculum of interest, and the availability of evening/weekend classes (even though during this year 0% indicated that they primarily attended weekend classes).

Over 82% agreed that if PBCC had not been available, they would be able to continue their education elsewhere. Among the 17.6% (Q13) students who indicated that they would not be able to continue their education, 35.2% indicated that they were only able to attend a college within commuting distance from home, 32.8% said that tuition and fees at other colleges were more than they could afford and 22.4% said that only PBCC offered courses at times that fit with their family and work responsibilities.



As for future plans after graduating, 81.2% indicated that they planned to transfer to a four-year college, 10.6% planned to work full time and/or part time.

Overall, the majority of students rated positively all of the items related to instruction at PBCC (Q16), with the most favorable being in average class size (51.6%). When asked about the services available to students at PBCC, students also rated nearly all of the services positively, however one service received poor rating was the Cafeteria (11.2%).

Students felt very satisfied about how PBCC has prepared them and developed their abilities in specific job-related areas (Q18) and technical skills (Q19). All areas were rated similarly.

Students indicated that their experiences at PBCC were very positive. Overall the students seem to be very impressed with PBCC (93.3%) (Q21), and over 94% would recommend PBCC to their friends.

When asked how long they have been attending PBCC, 43.1% students responded that they have been here for 2-3 years, 32.1% indicated they have been here 3-5 years. Over 11% of the students attended PBCC for 1-2 years.

There were more female students than males responding to the graduating survey, 65.6% females and 34.4% males. Most students were within the age groups of 20-21, 22-24, and 25-29 respectively. Most students belong to the racial/ethnic background of “White” (49.6%), “Black” (21.9%), and “Hispanic/Latino” (17.1%).

## Graduating Student Frequencies (Spring and Fall 2006)

**TOTAL STUDENTS = 722**

**Q1 Did you attend PBCC primarily as a**

Items		
	#	%
Full-time student	479	66.3%
Part-time student	243	33.7%

**Q2 On which campus did you take most of your classes**

Items		
	#	%
Lake Worth	347	48.2%
Palm Beach Gardens	194	26.9%
Boca Raton	157	21.8%
Belle Glade	22	3.1%

**Q3 Did you attend class primarily as a:**

Items		
	#	%
Day student	492	68.7%
Evening student	201	28.1%
Weekend student	0	0.0%
Distance/Online learning student	23	3.2%

**Q4 Please indicate which degree or certificate you are graduating with.**

Items		
	#	%
A.A. degree	622	87.0%
A.S. degree	59	8.3%
A.A.S. degree	28	3.9%
Certificate	6	0.8%

**Q6 Before you enrolled at PBCC, had you ever attended another college/university?**

Items		
	#	%
Yes	268	37.4%
No	448	62.6%

**Q7 During the time you were enrolled at PBCC, were you:**

Items		
	#	%
Employed full-time	331	46.0%
Employed part-time	281	39.1%
Homemaker, not employed outside the home	19	2.6%
Not employed and seeking employment	18	2.5%
Not employed and not seeking employment	70	9.7%

**Q8 If you were employed while attending PBCC, was your job related to your curriculum at the College?**

Items		
	#	%
Yes, directly related	110	15.5%
Yes, somewhat related	167	23.6%
No, not related	346	48.9%
Not employed while attending PBCC	85	12.0%

**Q9 Did you receive financial aid or scholarships while attending PBCC?**

Items		
	#	%
Yes	376	52.1%
No	345	47.9%

**Q10 What was your primary goal in attending PBCC?**

Items		
	#	%
To obtain occupational/technical training that would improve present/future employment	44	6.1%
To obtain an occupational/technical degree or certificate	34	4.7%
To obtain an associate degree in order to transfer to a four-year college/university	607	84.3%
To enroll in courses that would satisfy specialized/personal interests	14	1.9%
Other (please specify)	21	2.9%

**Q11 Did you achieve your primary goal?**

Items		
	#	%
Yes	661	91.9%
No	17	2.4%
Not sure (please Specify)	41	5.7%

**Q12 Please indicate the most important reasons you attended PBCC.**

Items		
	#	%
Affordable tuition	524	72.6%
Open admission policy	182	25.2%
Close to home	569	78.8%
Good academic reputation	261	36.1%
Availability of financial aid	160	22.2%
Offered courses/curriculum of interest	271	37.5%
Small classes/individual attention	358	49.6%
Only program offered locally in my area of interest	49	6.8%
Availability of evening/weekend courses	263	36.4%
Personal improvement	216	29.9%
To obtain a job	99	13.7%
To obtain better pay/promotion	139	19.3%

Note: Multiple responses allowed: percents don't total 100.

**Q13 If PBCC had not been available, would you have been able to continue your education elsewhere?**

Items		
	#	%
Yes	595	82.4%
No	127	17.6%

**Q14 Please indicate the primary reason that you would not have been able to continue your education.**

Items		
	#	%
Only PBCC offered my program	3	2.4%
Only able to attend college within commuting distance of my home	44	35.2%
Tuition and fees at other colleges were more than I could afford	41	32.8%
Only PBCC offered courses at times that fit with my family and work responsibilities	28	22.4%
Was not accepted for admission into other colleges	8	6.4%
Other (please specify)	1	0.8%

**Q15 After graduating from PBCC, what are your plans for the future?**

Items		
	#	%
Transfer to a four-year college	584	81.2%
Work full-time	72	10.0%
Work part-time	4	0.6%
Military	1	0.1%
Not sure	24	3.3%
Other	34	4.7%

**Q16 How you feel about the following items related to instruction at PBCC .**

Items	Excellent (5)		4		3		2		Poor (1)		Total
	#	%	#	%	#	%	#	%	#	%	
Overall quality of instruction	247	34.5%	365	51.0%	88	12.3%	10	1.4%	5	0.7%	715
Individual attention from professors	244	34.1%	329	46.0%	116	16.2%	20	2.8%	6	0.8%	715
Instructor availability	260	37.0%	289	41.1%	119	16.9%	23	3.3%	12	1.7%	703
Course advisement from faculty members	239	34.5%	243	35.1%	128	18.5%	42	6.1%	41	5.9%	693
Content of courses in major curriculum	242	35.0%	303	43.8%	122	17.7%	14	2.0%	10	1.4%	691
Average class size	366	51.6%	272	38.4%	61	8.6%	7	1.0%	3	0.4%	709
Quality of curriculum in providing job-related skills and knowledge	223	34.0%	273	41.6%	129	19.7%	22	3.4%	9	1.4%	656
Quality of curriculum in preparing for further education	277	39.4%	291	41.4%	104	14.8%	23	3.3%	8	1.1%	703
Fairness of grading and testing practices	278	39.0%	308	43.3%	96	13.5%	21	2.9%	9	1.3%	712

**Q17 How you feel about the following services available to students at PBCC.**

Items	Excellent (5)		4		3		2		Poor (1)		Total
	#	%	#	%	#	%	#	%	#	%	
Academic Advising	290	43.4%	202	30.2%	94	14.1%	36	14.1%	46	6.9%	668
Personal Guidance and Counseling	225	40.3%	156	27.9%	110	19.7%	30	19.7%	38	6.8%	559
Financial Aid Services	174	36.7%	123	25.9%	93	19.6%	36	19.6%	48	10.1%	474
Admissions	265	39.1%	248	36.6%	117	17.3%	24	17.3%	23	3.4%	677
Registration	292	42.8%	256	37.5%	99	14.5%	17	14.5%	19	2.8%	683
Registrar's Office	250	39.4%	228	36.0%	110	17.4%	25	17.4%	21	3.3%	634
Automated Phone Services	150	30.1%	160	32.1%	107	21.4%	40	21.4%	42	8.4%	499
Online Services	376	56.6%	219	33.0%	54	8.1%	12	8.1%	3	0.5%	664
Testing Services	251	43.0%	241	41.3%	72	12.3%	10	12.3%	10	1.7%	584
Lab Facilities (biology, chemistry, math, etc.)	255	46.5%	187	34.1%	78	14.2%	20	14.2%	8	1.5%	548
Library	288	47.8%	221	36.7%	68	11.3%	10	11.3%	16	2.7%	603
Career Planning and counseling	183	39.4%	159	34.2%	88	18.9%	17	18.9%	18	3.9%	465
Job Placement Services	123	40.2%	113	36.9%	56	18.3%	9	18.3%	5	1.6%	306
Student Activities (clubs, events, etc.)	150	40.2%	139	37.3%	59	15.8%	15	15.8%	10	2.7%	373
Computer Labs	303	53.3%	175	30.8%	77	13.5%	9	13.5%	5	0.9%	569
Cafeteria	132	28.0%	158	33.5%	93	19.7%	36	19.7%	53	11.2%	472
Student Learning Center	227	46.9%	189	39.0%	57	11.8%	8	11.8%	3	0.6%	484
Disability Services	115	50.4%	79	34.6%	26	11.4%	4	11.4%	4	1.8%	228
Athletics	103	41.5%	78	31.5%	36	14.5%	10	14.5%	21	8.5%	248
Theater	126	42.9%	117	39.8%	35	11.9%	8	11.9%	8	2.7%	294

**Q18 How you feel about how PBCC has prepared you in the following areas.**

Items	Excellent (5)		4		3		2		Poor (1)		Total
	#	%	#	%	#	%	#	%	#	%	
Technical job skills	137	33.7%	159	39.2%	93	22.9%	13	3.2%	4	1.0%	406
Technical job-related knowledge	147	34.9%	180	42.8%	79	18.8%	9	2.1%	6	1.4%	421
Writing skills	255	40.6%	246	39.2%	107	17.0%	15	2.4%	5	0.8%	628
Understanding written information	271	43.2%	247	39.4%	98	15.6%	9	1.4%	2	0.3%	627
Speaking skills	271	43.3%	246	39.3%	92	14.7%	14	2.2%	3	0.5%	626
Mathematical skills	248	39.6%	243	38.8%	109	17.4%	16	2.6%	11	1.8%	627
The ability to think critically rather than just memorize	249	38.8%	249	38.8%	117	18.3%	18	2.8%	8	1.2%	641
Solving problems	243	38.6%	254	40.3%	114	18.1%	14	2.2%	5	0.8%	630
Thinking creatively	257	40.7%	245	38.8%	112	17.7%	13	2.1%	4	0.6%	631
Ethical behavior	247	40.6%	240	39.5%	102	16.8%	14	2.3%	5	0.8%	608
Locating and using information in the library	235	40.1%	223	38.1%	102	17.4%	15	2.6%	11	1.9%	586
Basic computer functions and applications	271	45.2%	226	37.7%	87	14.5%	11	1.8%	5	0.8%	600
Ability to locate information quickly and efficiently	256	41.5%	246	39.9%	101	16.4%	6	1.0%	8	1.3%	617
Ability to analyze data and draw conclusions	249	40.4%	253	41.0%	99	16.0%	10	1.6%	6	1.0%	617
Preparation to transfer to a four-year college	273	44.7%	223	36.5%	87	14.2%	16	2.6%	12	2.0%	611

**Q19 How you feel your coursework at PBCC has developed your abilities in the following areas.**

Items	Excellent (5)		4		3		2		Poor (1)		Total
	#	%	#	%	#	%	#	%	#	%	
Word processing	286	50.4%	197	34.7%	72	12.7%	4	0.7%	9	1.6%	568
Spreadsheets	188	38.1%	171	34.7%	101	20.5%	16	3.2%	17	3.4%	493
Graphics	157	35.0%	152	33.9%	101	22.5%	18	4.0%	21	4.7%	449
Data entry	196	40.8%	162	33.8%	89	18.5%	17	3.5%	16	3.3%	480
Database management	161	35.8%	157	34.9%	88	19.6%	24	5.3%	20	4.4%	450
Internet skills	304	53.5%	187	32.9%	59	10.4%	8	1.4%	10	1.8%	568
E-mail	300	54.3%	176	31.9%	57	10.3%	9	1.6%	10	1.8%	552
Web page development	166	39.2%	131	30.9%	78	18.4%	20	4.7%	29	6.8%	424
Multimedia software (e.g., Powerpoint)	229	44.4%	173	33.5%	78	15.1%	19	3.7%	17	3.3%	516

**Q20 Rate the following aspects of your experience at PBCC.**

Items	Excellent (5)		4		3		2		Poor (1)		Total
	#	%	#	%	#	%	#	%	#	%	
Opportunity to meet other students	267	44.7%	187	31.3%	100	16.8%	22	3.7%	21	3.5%	597
Opportunity to develop friendships with students of diverse cultural backgrounds	276	46.7%	186	31.5%	87	14.7%	19	3.2%	23	3.9%	591
Availability of courses in the sequence you need them	246	40.1%	210	34.3%	111	18.1%	23	3.8%	23	3.8%	613
Overall quality of classroom instruction	242	39.4%	255	41.5%	98	16.0%	14	2.3%	5	0.8%	614
Availability of faculty outside of class	215	37.4%	207	36.0%	109	19.0%	23	4.0%	21	3.7%	575
General helpfulness of faculty	248	40.9%	225	37.1%	99	16.3%	24	4.0%	11	1.8%	607
General helpfulness of other college employees	227	38.3%	217	36.7%	105	17.7%	26	4.4%	17	2.9%	592
Ease of getting accurate answers to my questions	202	32.9%	230	37.5%	128	20.8%	37	6.0%	17	2.8%	614
Timely availability of information on the range of services available to students	217	36.3%	232	38.9%	104	17.4%	25	4.2%	19	3.2%	597
Adequacy of classroom physical environment for learning	251	41.0%	251	41.0%	95	15.5%	9	1.5%	6	1.0%	612
Adequacy of study spaces	264	43.9%	219	36.4%	89	14.8%	17	2.8%	13	2.2%	602
Adequacy of places to rest and relax between classes	250	41.7%	195	32.6%	100	16.7%	28	4.7%	26	4.3%	599
Facility cleanliness	260	42.5%	226	36.9%	92	15.0%	22	3.6%	12	2.0%	612
Physical attractiveness of campus	248	40.3%	219	35.6%	106	17.2%	24	3.9%	18	2.9%	615
Sense of comfort with campus environment and atmosphere	289	46.9%	221	35.9%	78	12.7%	20	3.2%	8	1.3%	616
Sense of comfort with institutional cultural diversity	290	47.8%	214	35.3%	79	13.0%	18	3.0%	6	1.0%	607
Sense of personal and property safety inside college buildings	284	46.3%	215	35.0%	93	15.1%	17	2.8%	5	0.8%	614
Sense of personal and property safety outside of college buildings	265	43.4%	207	33.9%	101	16.6%	25	4.1%	12	2.0%	610
Sense of being respected and valued as an individual	278	45.2%	225	36.6%	83	13.5%	20	3.3%	9	1.5%	615

**Q21 What is your overall impression of PBCC?**

Items		
	#	%
Excellent	319	45.2%
Good	339	48.1%
Fair	38	5.4%
Poor	9	1.3%

**Q22 Would you recommend PBCC to your friends?**

Items		
	#	%
Definitely	512	72.7%
Probably	153	21.7%
Might or might not	30	4.3%
Probably not	4	0.6%
Definitely no	5	0.7%

**Q23 How many years did you attend PBCC?**

Items		
	#	%
Less than 1 year	13	1.8%
1 year but less than 2 years	84	11.9%
2 years but less than 3 years	305	43.1%
3 years but less than 5 years	227	32.1%
5 years or more	79	11.2%

**Q24 What is your gender?**

Items	#	%
Male	242	34.4%
Female	462	65.6%



**Q25 What is your age**

Items		
	#	%
Under 20	55	7.8%
20 - 21	198	28.0%
22 - 24	172	24.3%
25 - 29	128	18.1%
30 - 39	89	12.6%
40 or older	65	9.2%

**Q26 What is your racial/ethnic background?**

Items		
	#	%
Asian or Pacific Islander	27	3.9%
Black or African American	153	21.9%
Hispanic or Latino	120	17.1%
American Indian or Alaskan Native	8	1.1%
White	347	49.6%
Other	45	6.4%

### Results for Graduating Student Survey 2007

During the year **2007**, 606 students responded to the survey (a drop of approximately 16% from 2006), with 66.7% being full-time students and 33.3% being part-time. The majority (49%) attended the Lake Worth campus, 25.2% at the Palm Beach Gardens campus, 21.6% at the Boca Raton campus and only 4.1% at the Belle Glade Campus.

Many students attended classes primarily during the day (66.1%), and 29.2% primarily attended evening classes. A low percentage of students primarily attended Distance/online learning.

Most students (87%) indicated that they were graduating with an A.A degree, while a much smaller percentage graduated with A.S degree (6.3%), and A.A.S degrees (5.2%).

A high percentage (64.5%) of students did not attend college/university prior to PBCC. During the time of being enrolled at PBCC, 50.2% indicated that they were employed full time and 38% were working part time. Approximately 8% responded that they were not employed and not seeking employment and 1.5% indicated that they were not employed but seeking employment (Q7). Among the 88.2% who indicated they were employed, 40.5% agreed that the curriculum was related to their job (Q8).

Over 53% (Q9) responded that they have received financial aid or scholarships while attending PBCC. A high number of students (85.2%) mentioned that their primary goal was to obtain an associate degree in order to transfer to a four-year college/university. Other goals included, to obtain occupational/technical training that would improve present/future employment, obtain an occupational/technical degree or certificate, and to enroll in courses that would satisfy specialize/personal interests. Over 93% of the students agreed that they have achieved their primary goal (Q11).

The number one most important reason that students attended PBCC was because it was close to home (82.8%). The second important reason was affordable tuition (75.1%). Additional top three reasons were, small classes/individual attention, offered courses/curriculum of interest, and the availability of evening/weekend classes (even though during this year 0% indicated that they primarily attended weekend classes).

Over 79% agreed that if PBCC had not been available, they would be able to continue their education elsewhere. Among the 20.7% (Q13) students who indicated that they would not be able to continue their education, 35.5% said that tuition and fees at other colleges were more than they could afford, 25.5% indicated that they were only able to attend a college within commuting distance from home, and 18.2% said that only PBCC offered courses at times that fit with their family and work responsibilities.

As for future plans after graduating, 80.5% indicated that they planned to transfer to a four-year college, 9.6% planned to work full time and/or part time.

Overall, the majority of students rated positively all of the items related to instruction at PBCC (Q16), with the most favorable being in average class size (57.1%). When asked about the services available to students at PBCC, students also rated nearly all of the services positively, however one service received poor rating was automated phone services (10.8%).

Students felt very satisfied about how PBCC has prepared them and developed their abilities in specific job-related areas (Q18) and technical skills (Q19). All areas were rated similarly.

Students indicated that their experiences at PBCC were very positive. Overall the students seem to be very impressed with PBCC (94.8%) (Q21), and over 94% would recommend PBCC to their friends.

When asked how long they have been attending PBCC, 44.3% students responded that they have been here for 2-3 years, 30.2% indicated they have been here 3-5 years. Over 12% of the students attended PBCC for over 5 years.

There were more female students than males responding to the graduating survey, 72.4% females and 27.6% males. Most students were within the age groups of 20-21, 22-24, and 25-29 respectively. Most students belong to the racial/ethnic background of “White” (48.9%), “Black” (22.6%), and “Hispanic/Latino” (16.8%).

## Graduating Student Frequencies (Spring and Fall 2007)

**TOTAL STUDENTS = 606**

**Q1 Did you attend PBCC primarily as a**

Items		
	#	%
Full-time student	404	66.7%
Part-time student	202	33.3%

**Q2 On which campus did you take most of your classes**

Items		
	#	%
Lake Worth	297	49.0%
Palm Beach Gardens	153	25.2%
Boca Raton	131	21.6%
Belle Glade	25	4.1%

**Q3 Did you attend class primarily as a:**

Items		
	#	%
Day student	398	66.1%
Evening student	176	29.2%
Weekend student	1	0.2%
Distance/Online learning student	27	4.5%

**Q4 Please indicate which degree or certificate you are graduating with.**

Items		
	#	%
A.A. degree	521	87.0%
A.S. degree	38	6.3%
A.A.S. degree	31	5.2%
Certificate	9	1.5%

**Q6 Before you enrolled at PBCC, had you ever attended another college/university?**

Items		
	#	%
Yes	215	35.5%
No	390	64.5%

**Q7 During the time you were enrolled at PBCC, were you:**

Items		
	#	%
Employed full-time	304	50.2%
Employed part-time	230	38.0%
Homemaker, not employed outside the home	15	2.5%
Not employed and seeking employment	9	1.5%
Not employed and not seeking employment	48	7.9%

**Q8 If you were employed while attending PBCC, was your job related to your curriculum at the College?**

Items		
	#	%
Yes, directly related	83	14.0%
Yes, somewhat related	157	26.5%
No, not related	296	49.9%
Not employed while attending PBCC	57	9.6%

**Q9 Did you receive financial aid or scholarships while attending PBCC?**

Items		
	#	%
Yes	323	53.9%
No	276	46.1%

**Q10 What was your primary goal in attending PBCC?**

Items		
	#	%
To obtain occupational/technical training that would improve present/future employment	34	5.6%
To obtain an occupational/technical degree or certificate	30	5.0%
To obtain an associate degree in order to transfer to a four-year college/university	514	85.2%
To enroll in courses that would satisfy specialized/personal interests	14	2.3%
Other (please specify)	11	1.8%

**Q11 Did you achieve your primary goal?**

Items		
	#	%
Yes	564	93.4%
No	8	1.3%
Not sure (please Specify)	32	5.3%

**Q12 Please indicate the most important reasons you attended PBCC.**

Items		
	#	%
Affordable tuition	455	75.1%
Open admission policy	205	33.8%
Close to home	502	82.8%
Good academic reputation	237	39.1%
Availability of financial aid	161	26.6%
Offered courses/curriculum of interest	256	42.2%
Small classes/individual attention	336	55.4%
Only program offered locally in my area of interest	27	4.5%
Availability of evening/weekend courses	241	39.8%
Personal improvement	186	30.7%
To obtain a job	84	13.9%
To obtain better pay/promotion	130	21.5%

Note: Multiple responses allowed: percents don't total 100.

**Q13 If PBCC had not been available, would you have been able to continue your education elsewhere?**

Items		
	#	%
Yes	497	79.3%
No	130	20.7%

**Q14 Please indicate the primary reason that you would not have been able to continue your education.**

Items		
	#	%
Only PBCC offered my program	4	3.6%
Only able to attend college within commuting distance of my home	28	25.5%
Tuition and fees at other colleges were more than I could afford	39	35.5%
Only PBCC offered courses at times that fit with my family and work responsibilities	20	18.2%
Was not accepted for admission into other colleges	9	8.2%
Other (please specify)	10	9.1%

**Q15 After graduating from PBCC, what are your plans for the future?**

Items		
	#	%
Transfer to a four-year college	487	80.5%
Work full-time	53	8.8%
Work part-time	5	0.8%
Military	3	0.5%
Not sure	14	2.3%
Other	43	7.1%

**Q16 How you feel about the following items related to instruction at PBCC .**

Items	Excellent (5)		4		3		2		Poor (1)		Total
	#	%	#	%	#	%	#	%	#	%	
Overall quality of instruction	231	38.6%	286	47.8%	65	10.9%	11	1.8%	5	0.8%	598
Individual attention from professors	239	39.8%	266	44.3%	73	12.2%	16	2.7%	6	1.0%	600
Instructor availability	243	40.8%	233	39.2%	101	17.0%	9	1.5%	9	1.5%	595
Course advisement from faculty members	233	40.2%	191	32.9%	99	17.1%	29	5.0%	28	4.8%	580
Content of courses in major curriculum	253	42.8%	235	39.8%	82	13.9%	13	2.2%	8	1.4%	591
Average class size	340	57.1%	200	33.6%	47	7.9%	6	1.0%	2	0.3%	595
Quality of curriculum in providing job-related skills and knowledge	220	39.4%	214	38.3%	103	18.4%	16	2.9%	6	1.1%	559
Quality of curriculum in preparing for further education	258	43.6%	240	40.5%	75	12.7%	9	1.5%	10	1.7%	592
Fairness of grading and testing practices	277	46.4%	219	36.7%	84	14.1%	10	1.7%	7	1.2%	597

**Q17 How you feel about the following services available to students at PBCC.**

Items	Excellent (5)		4		3		2		Poor (1)		Total
	#	%	#	%	#	%	#	%	#	%	
Academic Advising	271	47.8%	161	28.4%	79	13.9%	26	13.9%	30	5.3%	567
Personal Guidance and Counseling	214	44.9%	146	30.6%	72	15.1%	25	15.1%	20	4.2%	477
Financial Aid Services	174	43.5%	104	26.0%	57	14.3%	24	14.3%	41	10.3%	400
Admissions	254	44.7%	184	32.4%	84	14.8%	30	14.8%	16	2.8%	568
Registration	265	46.2%	180	31.4%	84	14.7%	24	14.7%	20	3.5%	573
Registrar's Office	226	43.0%	172	32.7%	81	15.4%	25	15.4%	22	4.2%	526
Automated Phone Services	138	33.2%	117	28.1%	78	18.8%	38	18.8%	45	10.8%	416
Online Services	312	57.4%	165	30.3%	54	9.9%	8	9.9%	5	0.9%	544
Testing Services	237	48.4%	167	34.1%	59	12.0%	18	12.0%	9	1.8%	490
Lab Facilities (biology, chemistry, math, etc.)	239	51.7%	134	29.0%	65	14.1%	17	14.1%	7	1.5%	462
Library	289	56.0%	151	29.3%	47	9.1%	17	9.1%	12	2.3%	516
Career Planning and counseling	183	47.0%	127	32.6%	55	14.1%	12	14.1%	12	3.1%	389
Job Placement Services	108	44.6%	82	33.9%	37	15.3%	9	15.3%	6	2.5%	242
Student Activities (clubs, events, etc.)	131	45.0%	93	32.0%	42	14.4%	13	14.4%	12	4.1%	291
Computer Labs	270	56.8%	145	30.5%	42	8.8%	7	8.8%	11	2.3%	475
Cafeteria	137	35.6%	99	25.7%	73	19.0%	37	19.0%	39	10.1%	385
Student Learning Center	218	53.2%	128	31.2%	49	12.0%	4	12.0%	11	2.7%	410
Disability Services	98	53.3%	59	32.1%	21	11.4%	2	11.4%	4	2.2%	184
Athletics	84	44.0%	64	33.5%	27	14.1%	6	14.1%	10	5.2%	191
Theater	116	48.1%	85	35.3%	28	11.6%	6	11.6%	6	2.5%	241

**Q18 How you feel about how PBCC has prepared you in the following areas.**

Items	Excellent (5)		4		3		2		Poor (1)		Total
	#	%	#	%	#	%	#	%	#	%	
Technical job skills	131	35.5%	147	39.8%	65	17.6%	22	6.0%	4	1.1%	369
Technical job-related knowledge	142	37.8%	146	38.8%	66	17.6%	18	4.8%	4	1.1%	376
Writing skills	230	43.9%	201	38.4%	70	13.4%	16	3.1%	7	1.3%	524
Understanding written information	251	48.3%	197	37.9%	53	10.2%	13	2.5%	6	1.2%	520
Speaking skills	258	50.1%	180	35.0%	62	12.0%	9	1.7%	6	1.2%	515
Mathematical skills	247	47.3%	180	34.5%	79	15.1%	11	2.1%	5	1.0%	522
The ability to think critically rather than just memorize	241	45.4%	188	35.4%	86	16.2%	11	2.1%	5	0.9%	531
Solving problems	238	45.4%	193	36.8%	81	15.5%	9	1.7%	3	0.6%	524
Thinking creatively	255	48.3%	180	34.1%	76	14.4%	12	2.3%	5	0.9%	528
Ethical behavior	256	49.6%	183	35.5%	57	11.0%	11	2.1%	9	1.7%	516
Locating and using information in the library	252	50.4%	145	29.0%	76	15.2%	18	3.6%	9	1.8%	500
Basic computer functions and applications	264	51.6%	168	32.8%	65	12.7%	10	2.0%	5	1.0%	512
Ability to locate information quickly and efficiently	241	45.7%	197	37.4%	72	13.7%	10	1.9%	7	1.3%	527
Ability to analyze data and draw conclusions	228	44.0%	199	38.4%	75	14.5%	10	1.9%	6	1.2%	518
Preparation to transfer to a four-year college	255	49.5%	172	33.4%	57	11.1%	22	4.3%	9	1.7%	515

**Q19 How you feel your coursework at PBCC has developed your abilities in the following areas.**

Items	Excellent (5)		4		3		2		Poor (1)		Total
	#	%	#	%	#	%	#	%	#	%	
Word processing	270	57.7%	139	29.7%	48	10.3%	7	1.5%	4	0.9%	468
Spreadsheets	190	47.3%	113	28.1%	67	16.7%	20	5.0%	12	3.0%	402
Graphics	166	44.1%	111	29.5%	66	17.6%	19	5.1%	14	3.7%	376
Data entry	204	51.5%	111	28.0%	56	14.1%	12	3.0%	13	3.3%	396
Database management	164	44.4%	114	30.9%	61	16.5%	17	4.6%	13	3.5%	369
Internet skills	277	58.1%	141	29.6%	48	10.1%	3	0.6%	8	1.7%	477
E-mail	290	61.2%	117	24.7%	58	12.2%	2	0.4%	7	1.5%	474
Web page development	170	50.0%	82	24.1%	49	14.4%	15	4.4%	24	7.1%	340
Multimedia software (e.g., Powerpoint)	227	54.3%	120	28.7%	53	12.7%	9	2.2%	9	2.2%	418



**Q20 Rate the following aspects of your experience at PBCC.**

Items	Excellent (5)		4		3		2		Poor (1)		Total
	#	%	#	%	#	%	#	%	#	%	
Opportunity to meet other students	236	47.0%	137	27.3%	90	17.9%	27	5.4%	12	2.4%	502
Opportunity to develop friendships with students of diverse cultural backgrounds	243	48.8%	144	28.9%	77	15.5%	19	3.8%	15	3.0%	498
Availability of courses in the sequence you need them	216	41.9%	179	34.8%	80	15.5%	22	4.3%	18	3.5%	515
Overall quality of classroom instruction	215	41.9%	211	41.1%	69	13.5%	10	1.9%	8	1.6%	513
Availability of faculty outside of class	206	41.7%	176	35.6%	85	17.2%	15	3.0%	12	2.4%	494
General helpfulness of faculty	233	45.3%	179	34.8%	81	15.8%	11	2.1%	10	1.9%	514
General helpfulness of other college employees	211	42.9%	160	32.5%	78	15.9%	24	4.9%	19	3.9%	492
Ease of getting accurate answers to my questions	193	37.5%	178	34.6%	88	17.1%	35	6.8%	21	4.1%	515
Timely availability of information on the range of services available to students	203	41.4%	174	35.5%	77	15.7%	22	4.5%	14	2.9%	490
Adequacy of classroom physical environment for learning	226	44.7%	188	37.2%	75	14.8%	11	2.2%	6	1.2%	506
Adequacy of study spaces	236	47.0%	170	33.9%	70	13.9%	12	2.4%	14	2.8%	502
Adequacy of places to rest and relax between classes	218	44.9%	139	28.6%	85	17.5%	20	4.1%	24	4.9%	486
Facility cleanliness	226	44.1%	182	35.5%	79	15.4%	13	2.5%	12	2.3%	512
Physical attractiveness of campus	210	41.3%	173	34.0%	97	19.1%	18	3.5%	11	2.2%	509
Sense of comfort with campus environment and atmosphere	253	49.8%	171	33.7%	73	14.4%	5	1.0%	6	1.2%	508
Sense of comfort with institutional cultural diversity	252	49.4%	172	33.7%	70	13.7%	8	1.6%	8	1.6%	510
Sense of personal and property safety inside college buildings	259	50.8%	162	31.8%	67	13.1%	17	3.3%	5	1.0%	510
Sense of personal and property safety outside of college buildings	236	46.1%	154	30.1%	79	15.4%	27	5.3%	16	3.1%	512
Sense of being respected and valued as an individual	271	52.9%	157	30.7%	63	12.3%	14	2.7%	7	1.4%	512

**Q21 What is your overall impression of PBCC?**

Items		
	#	%
Excellent	299	50.3%
Good	265	44.5%
Fair	24	4.0%
Poor	7	1.2%

**Q22 Would you recommend PBCC to your friends?**

Items		
	#	%
Definitely	444	74.9%
Probably	118	19.9%
Might or might not	21	3.5%
Probably not	5	0.8%
Definitely no	5	0.8%

**Q23 How many years did you attend PBCC?**

Items		
	#	%
Less than 1 year	12	2.0%
1 year but less than 2 years	64	10.8%
2 years but less than 3 years	262	44.3%
3 years but less than 5 years	179	30.2%
5 years or more	75	12.7%

**Q24 What is your gender?**

Items	#	%
Male	163	27.6%
Female	427	72.4%

**Q25 What is your age**

Items		
	#	%
Under 20	45	7.6%
20 - 21	182	30.6%
22 - 24	137	23.1%
25 - 29	88	14.8%
30 - 39	77	13.0%
40 or older	65	10.9%

**Q26 What is your racial/ethnic background?**

Items		
	#	%
Asian or Pacific Islander	19	3.2%
Black or African American	133	22.6%
Hispanic or Latino	99	16.8%
American Indian or Alaskan Native	0	0.0%
White	288	48.9%
Other	50	8.5%

### Results for Graduating Student Survey 2008

During the year **2008**, 605 students responded to the survey, with 64% being full-time students and 36% being part-time. The majority (48.1%) attended the Lake Worth campus, 26% at the Palm Beach Gardens campus, 20.8% at the Boca Raton campus and only 5.1% at the Belle Glade Campus.

Many students attended classes primarily during the day (66.2%), and 30.5% primarily attended evening classes. A low percentage of students primarily attended Distance/online learning.

Most students (84.2%) indicated that they were graduating with an A.A degree, while a much smaller percentage graduated with A.S degree (10%), and A.A.S degrees (3.2%).

A high percentage (63.7%) of students did not attend college/university prior to PBCC. During the time of being enrolled at PBCC, 49.2% indicated that they were employed full time and 37.4% were working part time. Approximately 7% responded that they were not employed and not seeking employment and 4% indicated that they were not employed but seeking employment (Q7). Among the 86.6% who indicated they were employed, 38.2% agreed that the curriculum was related to their job (Q8).

Over 53% (Q9) responded that they have received financial aid or scholarships while attending PBCC. A high number of students (83.2%) mentioned that their primary goal was to obtain an associate degree in order to transfer to a four-year college/university. Other goals included, to obtain occupational/technical training that would improve present/future employment, obtain an occupational/technical degree or certificate, and to enroll in courses that would satisfy specialize/personal interests. Over 95% of the students agreed that they have achieved their primary goal (Q11).

The number one most important reason that students attended PBCC was because it was close to home (81.8%). The second important reason was affordable tuition (75.4%). Additional top three reasons were, small classes/individual attention, offered courses/curriculum of interest, and the good academic reputation.

Over 79% agreed that if PBCC had not been available, they would be able to continue their education elsewhere. Among the 21% (Q13) students who indicated that they would not be able to continue their education, 35.4% said that tuition and fees at other colleges were more than they could afford, 26% indicated that they were only able to attend a college within commuting distance from home, and 22.8% said that only PBCC offered courses at times that fit with their family and work responsibilities.

As for future plans after graduating, 77.2% indicated that they planned to transfer to a four-year college, 13.8% planned to work full time and/or part time.

Overall, the majority of students rated positively all of the items related to instruction at PBCC (Q16), with the most favorable being in average class size (54.1%). When asked about the services available to students at PBCC, students also rated nearly all of the services positively, however one service received poor rating was financial aid services (9.1%).

Students felt very satisfied about how PBCC has prepared them and developed their abilities in specific job-related areas (Q18) and technical skills (Q19). All areas were rated similarly.

Students indicated that their experiences at PBCC were very positive. Overall the students seem to be very impressed with PBCC (92.8%) (Q21), and over 93% would recommend PBCC to their friends.

When asked how long they have been attending PBCC, 43.5% students responded that they have been here for 2-3 years, 22.9% indicated they have been here 3-5 years. Over 17.5% of the students said they have been at PBCC for 1-2 years.

There were more female students than males responding to the graduating survey, 70.9% females and 29.1% males. Most students were within the age groups of 20-21, 22-24, and 40+ respectively. Most students belong to the racial/ethnic background of “White” (48.4%), “Black” (23.8%), and “Hispanic/Latino” (17.8%).

## Graduating Student Frequencies (Spring and Fall 2008)

**TOTAL STUDENTS = 605**

**Q1 Did you attend PBCC primarily as a**

Items		
	#	%
Full-time student	387	64.0%
Part-time student	218	36.0%

**Q2 On which campus did you take most of your classes**

Items		
	#	%
Lake Worth	291	48.1%
Palm Beach Gardens	157	26.0%
Boca Raton	126	20.8%
Belle Glade	31	5.1%

**Q3 Did you attend class primarily as a:**

Items		
	#	%
Day student	400	66.2%
Evening student	184	30.5%
Weekend student	1	0.2%
Distance/Online learning student	19	3.1%

**Q4 Please indicate which degree or certificate you are graduating with.**

Items		
	#	%
A.A. degree	506	84.2%
A.S. degree	60	10.0%
A.A.S. degree	19	3.2%
Certificate	16	2.7%

**Q6 Before you enrolled at PBCC, had you ever attended another college/university?**

Items		
	#	%
Yes	218	36.3%
No	382	63.7%

**Q7 During the time you were enrolled at PBCC, were you:**

Items		
	#	%
Employed full-time	297	49.2%
Employed part-time	226	37.4%
Homemaker, not employed outside the home	16	2.6%
Not employed and seeking employment	24	4.0%
Not employed and not seeking employment	41	6.8%

**Q8 If you were employed while attending PBCC, was your job related to your curriculum at the College?**

Items		
	#	%
Yes, directly related	102	17.2%
Yes, somewhat related	125	21.0%
No, not related	297	50.0%
Not employed while attending PBCC	70	11.8%

**Q9 Did you receive financial aid or scholarships while attending PBCC?**

Items		
	#	%
Yes	320	53.2%
No	281	46.8%

**Q10 What was your primary goal in attending PBCC?**

Items		
	#	%
To obtain occupational/technical training that would improve present/future employment	50	8.3%
To obtain an occupational/technical degree or certificate	33	5.5%
To obtain an associate degree in order to transfer to a four-year college/university	501	83.2%
To enroll in courses that would satisfy specialized/personal interests	6	1.0%
Other (please specify)	12	2.0%

**Q11 Did you achieve your primary goal?**

Items		
	#	%
Yes	573	95.2%
No	11	1.8%
Not sure (please Specify)	18	3.0%

**Q12 Please indicate the most important reasons you attended PBCC.**

Items		
	#	%
Affordable tuition	456	75.4%
Open admission policy	173	28.6%
Close to home	495	81.8%
Good academic reputation	244	40.3%
Availability of financial aid	155	25.6%
Offered courses/curriculum of interest	276	45.6%
Small classes/individual attention	303	50.1%
Only program offered locally in my area of interest	39	6.4%
Availability of evening/weekend courses	231	38.2%
Personal improvement	213	35.2%
To obtain a job	90	14.9%
To obtain better pay/promotion	133	22.0%

Note: Multiple responses allowed: percents don't total 100.

**Q13 If PBCC had not been available, would you have been able to continue your education elsewhere?**

Items		
	#	%
Yes	478	79.0%
No	127	21.0%

**Q14 Please indicate the primary reason that you would not have been able to continue your education.**

Items		
	#	%
Only PBCC offered my program	4	3.1%
Only able to attend college within commuting distance of my home	33	26.0%
Tuition and fees at other colleges were more than I could afford	45	35.4%
Only PBCC offered courses at times that fit with my family and work responsibilities	29	22.8%
Was not accepted for admission into other colleges	12	9.4%
Other (please specify)	4	3.1%

**Q15 After graduating from PBCC, what are your plans for the future?**

Items		
	#	%
Transfer to a four-year college	467	77.2%
Work full-time	76	12.6%
Work part-time	7	1.2%
Military	2	0.3%
Not sure	19	3.1%
Other	34	5.6%

**Q16 How you feel about the following items related to instruction at PBCC .**

Items	Excellent (5)		4		3		2		Poor (1)		Total
	#	%	#	%	#	%	#	%	#	%	
Overall quality of instruction	249	41.9%	263	44.3%	76	12.8%	4	0.7%	2	0.3%	594
Individual attention from professors	260	44.1%	209	35.5%	102	17.3%	13	2.2%	5	0.8%	589
Instructor availability	263	45.2%	206	35.4%	92	15.8%	16	2.7%	5	0.9%	582
Course advisement from faculty members	235	41.3%	172	30.2%	110	19.3%	26	4.6%	26	4.6%	569
Content of courses in major curriculum	256	44.1%	233	40.1%	75	12.9%	13	2.2%	4	0.7%	581
Average class size	318	54.1%	200	61.0%	61	4.0%	7	1.2%	2	0.3%	588
Quality of curriculum in providing job-related skills and knowledge	223	40.0%	221	39.7%	93	16.7%	12	2.2%	8	1.4%	557
Quality of curriculum in preparing for further education	266	46.4%	219	38.2%	72	12.6%	11	1.9%	5	0.9%	573
Fairness of grading and testing practices	260	44.7%	247	42.4%	64	11.0%	8	1.4%	3	0.5%	582

**Q17 How you feel about the following services available to students at PBCC.**

Items	Excellent (5)		4		3		2		Poor (1)		Total
	#	%	#	%	#	%	2	%	#	%	
Academic Advising	251	45.2%	165	29.7%	77	13.9%	28	13.9%	34	6.1%	555
Personal Guidance and Counseling	202	44.0%	131	28.5%	68	14.8%	27	14.8%	31	6.8%	459
Financial Aid Services	154	38.0%	115	28.4%	72	17.8%	27	17.8%	37	9.1%	405
Admissions	244	44.3%	183	33.2%	83	15.1%	23	15.1%	18	3.3%	551
Registration	246	44.6%	182	33.0%	91	16.5%	18	16.5%	15	2.7%	552
Registrar's Office	217	42.1%	164	31.8%	98	19.0%	19	19.0%	17	3.3%	515
Automated Phone Services	135	33.7%	102	25.4%	94	23.4%	36	23.4%	34	8.5%	401
Online Services	279	52.4%	163	30.6%	73	13.7%	8	13.7%	9	1.7%	532
Testing Services	237	48.1%	163	33.1%	76	15.4%	11	15.4%	6	1.2%	493
Lab Facilities (biology, chemistry, math, etc.)	223	50.8%	120	27.3%	70	15.9%	13	15.9%	13	3.0%	439
Library	267	53.9%	146	29.5%	68	13.7%	5	13.7%	9	1.8%	495
Career Planning and counseling	173	43.6%	130	32.7%	70	17.6%	9	17.6%	15	3.8%	397
Job Placement Services	108	41.5%	73	28.1%	58	22.3%	9	22.3%	12	4.6%	260
Student Activities (clubs, events, etc.)	143	47.0%	98	32.2%	49	16.1%	10	16.1%	4	1.3%	304
Computer Labs	259	56.6%	134	29.3%	51	11.1%	9	11.1%	5	1.1%	458
Cafeteria	150	36.7%	115	28.1%	94	23.0%	26	23.0%	24	5.9%	409
Student Learning Center	227	53.9%	122	29.0%	64	15.2%	6	15.2%	2	0.5%	421
Disability Services	110	54.7%	53	26.4%	33	16.4%	4	16.4%	1	0.5%	201
Athletics	87	42.2%	53	25.7%	45	21.8%	11	21.8%	10	4.9%	206
Theater	131	49.8%	68	25.9%	48	18.3%	8	18.3%	8	3.0%	263



**Q18 How you feel about how PBCC has prepared you in the following areas.**

Items	Excellent (5)		4		3		2		Poor (1)		Total
	#	%	#	%	#	%	#	%	#	%	
Technical job skills	167	44.8%	122	32.7%	66	17.7%	9	2.4%	9	2.4%	373
Technical job-related knowledge	168	43.8%	132	34.4%	66	17.2%	11	2.9%	7	1.8%	384
Writing skills	235	45.3%	208	40.1%	62	11.9%	8	1.5%	6	1.2%	519
Understanding written information	240	47.0%	207	40.5%	55	10.8%	5	1.0%	4	0.8%	511
Speaking skills	267	51.7%	186	36.0%	53	10.3%	7	1.4%	3	0.6%	516
Mathematical skills	240	46.9%	170	33.2%	78	15.2%	11	2.1%	13	2.5%	512
The ability to think critically rather than just memorize	236	45.5%	188	36.2%	74	14.3%	10	1.9%	11	2.1%	519
Solving problems	236	45.4%	194	37.3%	75	14.4%	8	1.5%	7	1.3%	520
Thinking creatively	255	49.2%	180	34.7%	72	13.9%	7	1.4%	4	0.8%	518
Ethical behavior	243	47.6%	178	34.9%	72	14.1%	10	2.0%	7	1.4%	510
Locating and using information in the library	237	49.6%	157	32.8%	64	13.4%	11	2.3%	9	1.9%	478
Basic computer functions and applications	265	53.9%	153	31.1%	62	12.6%	8	1.6%	4	0.8%	492
Ability to locate information quickly and efficiently	249	49.0%	170	33.5%	74	14.6%	8	1.6%	7	1.4%	508
Ability to analyze data and draw conclusions	244	48.0%	167	32.9%	84	16.5%	7	1.4%	6	1.2%	508
Preparation to transfer to a four-year college	242	49.4%	150	30.6%	75	15.3%	13	2.7%	10	2.0%	490

**Q19 How you feel your coursework at PBCC has developed your abilities in the following areas.**

Items	Excellent (5)		4		3		2		Poor (1)		Total
	#	%	#	%	#	%	#	%	#	%	
Word processing	258	53.9%	155	32.4%	55	11.5%	8	1.7%	3	0.6%	479
Spreadsheets	185	45.9%	115	28.5%	70	17.4%	19	4.7%	14	3.5%	403
Graphics	170	44.9%	93	24.5%	80	21.1%	22	5.8%	14	3.7%	379
Data entry	185	46.4%	114	28.6%	72	18.0%	16	4.0%	12	3.0%	399
Database management	170	44.6%	96	25.2%	83	21.8%	18	4.7%	14	3.7%	381
Internet skills	266	50.2%	187	35.3%	59	11.1%	8	1.5%	10	1.9%	530
E-mail	277	58.1%	125	26.2%	58	12.2%	7	1.5%	10	2.1%	477
Web page development	162	48.4%	80	23.9%	56	16.7%	17	5.1%	20	6.0%	335
Multimedia software (e.g., Powerpoint)	229	52.2%	131	29.8%	61	13.9%	10	2.3%	8	1.8%	439

**Q20 Rate the following aspects of your experience at PBCC.**

Items	Excellent (5)		4		3		2		Poor (1)		Total
	#	%	#	%	#	%	#	%	#	%	
Opportunity to meet other students	262	53.9%	123	25.3%	77	15.8%	15	3.1%	9	1.9%	486
Opportunity to develop friendships with students of diverse cultural backgrounds	266	55.5%	114	23.8%	74	15.4%	14	2.9%	11	2.3%	479
Availability of courses in the sequence you need them	233	47.0%	150	30.2%	78	15.7%	22	4.4%	13	2.6%	496
Overall quality of classroom instruction	235	47.3%	181	36.4%	64	12.9%	14	2.8%	3	0.6%	497
Availability of faculty outside of class	205	44.2%	141	30.4%	88	19.0%	16	3.4%	14	3.0%	464
General helpfulness of faculty	240	48.8%	156	31.7%	76	15.4%	12	2.4%	8	1.6%	492
General helpfulness of other college employees	231	47.0%	152	30.9%	80	16.3%	17	3.5%	12	2.4%	492
Ease of getting accurate answers to my questions	209	42.6%	154	31.4%	95	19.3%	15	3.1%	18	3.7%	491
Timely availability of information on the range of services available to students	209	44.1%	162	34.2%	77	16.2%	15	3.2%	11	2.3%	474
Adequacy of classroom physical environment for learning	236	48.6%	167	34.4%	68	14.0%	9	1.9%	6	1.2%	486
Adequacy of study spaces	235	49.2%	146	30.5%	76	15.9%	15	3.1%	6	1.3%	478
Adequacy of places to rest and relax between classes	226	47.0%	124	25.8%	85	17.7%	29	6.0%	17	3.5%	481
Facility cleanliness	240	48.3%	141	28.4%	85	17.1%	22	4.4%	9	1.8%	497
Physical attractiveness of campus	218	44.2%	156	31.6%	88	17.8%	17	3.4%	14	2.8%	493
Sense of comfort with campus environment and atmosphere	258	52.0%	144	29.0%	76	15.3%	8	1.6%	10	2.0%	496
Sense of comfort with institutional cultural diversity	261	52.9%	158	32.0%	60	12.2%	7	1.4%	7	1.4%	493
Sense of personal and property safety inside college buildings	250	50.7%	149	30.2%	72	14.6%	12	2.4%	10	2.0%	493
Sense of personal and property safety outside of college buildings	228	46.7%	144	29.5%	75	15.4%	23	4.7%	18	3.7%	488
Sense of being respected and valued as an individual	250	50.7%	153	31.0%	73	14.8%	9	1.8%	8	1.6%	493

**Q21 What is your overall impression of PBCC?**

Items		
	#	%
Excellent	300	51.4%
Good	242	41.4%
Fair	38	6.5%
Poor	4	0.7%

**Q22 Would you recommend PBCC to your friends?**

Items		
	#	%
Definitely	444	75.9%
Probably	105	17.9%
Might or might not	29	5.0%
Probably not	5	0.9%
Definitely no	2	0.3%

**Q23 How many years did you attend PBCC?**

Items		
	#	%
Less than 1 year	14	2.7%
1 year but less than 2 years	90	17.5%
2 years but less than 3 years	224	43.5%
3 years but less than 5 years	118	22.9%
5 years or more	69	13.4%

**Q24 What is your gender?**

Items	#	%
Male	171	29.1%
Female	416	70.9%

**Q25 What is your age**

Items		
	#	%
Under 20	47	8.0%
20 - 21	182	30.9%
22 - 24	123	20.9%
25 - 29	61	10.4%
30 - 39	87	14.8%
40 or older	89	15.1%

**Q26 What is your racial/ethnic background?**

Items		
	#	%
Asian or Pacific Islander	22	3.8%
Black or African American	139	23.8%
Hispanic or Latino	104	17.8%
American Indian or Alaskan Native	0	0.0%
White	282	48.4%
Other	36	6.2%